



1- A NEW TOWER IS REQUIRED IN YOUR SECTOR

In order to provide reliable high-speed Internet access to rural communities, Xplornet must deploy a network of transmission sites on towers. A lack of reliable services in parts of your area requires the installation of a new tower.

WHY IS A NEW TOWER REQUIRED?

A radio antenna and a tower are the two most important elements of a communication system. The antenna is required to send and receive signals to residences wishing internet service. The tower raises the antenna over obstacles such as trees, hills and buildings so that it can send and receive these signals clearly.

Each radio station and its antenna system (including the tower) provide radio coverage of a specific geographic area, often called a cell. The antenna system must be carefully located to ensure that it provides a good signal on the entire cell, without interfering with other stations.

Currently, to our knowledge, the region covered by this proposal is underserved by high-speed wireless internet services.

Xplornet identified the need for a higher tower in the region to provide high quality, reliable and affordable broadband internet services to the area targeted by this proposal within 8 to 12 km of the new structure.

In accordance with our obligations, we searched for existing structures in the targeted area on which the antennas could be installed. We have not identified

any structure high enough to obtain the desired coverage. By default, the installation of a 50-meter tower was preferred.

2- WHERE WILL THE NEW TOWER BE LOCATED?

The proposed location for the new tower is:
3494 Lakeshore Rd., Alexandria, ON, K0C 1A0
Geographical coordinates are:
Latitude: 45.270669°
Longitude: -74.698394°

SEE SITE LAYOUT IN PLAN SCHEDULE A

3- CONFORMITY WITH HEALTH CANADA SAFETY CODE 6.

To ensure the protection of the public from all combined effects of radio installations within the local radio environment, Xplornet Communications Inc. certifies that, the equipment in this proposal, installed and operated including any changes that may be made to it, shall always remain in accordance with health Canada's Code 6 provisions.

Xplornet ensures that all of its facilities operate well below the allowable limits; in fact, this site will be thousands of times below the permitted limits.

For more information, please consult:
<https://www.canada.ca/en/health-canada/services/health-risks-safety/radiation/occupational-exposure-regulations/safety-code-6-radiofrequency-exposure-guidelines.html>

4- SECURITY AND PROXIMITY OF ANTENNAS?

Anti-climbing measures at the base of the tower prevent anyone from climbing onto the structure and approaching the antenna. A locked cabinet protects the equipment at the base of the tower.

5- THIS PROJECT'S ENVIRONMENTAL SITUATION

Xplornet Communications Inc., certifies that the environmental impacts of the radio antenna system described herein are not subject to an environmental assessment under the Canadian Environmental Impact Assessment Act (L.C. 2019, ch. 28, arti. 1).

For more information, please consult:
<https://laws-lois.justice.gc.ca/eng/acts/i-2.75/page-1.html>

6- DESCRIPTION OF THE ANTENNA SYSTEM AND TOWER

Initially, Xplornet will install on the tower 3 access points at 3.5Ghz as distributor antennas and a microwave antenna that will rest on a double brace support.

The facilities will be connected to Xplornet Communications Inc.'s network using a licensed 18GHz or 15GHz radio system with a 2-foot dish and/or a fiber optic link.

The tower will be 50m high and will be self-supporting. The proposed installation will be located on a 15m x 15m site, accompanied by a concrete base about 2m from the base of the tower to support the equipment cabinet, an emergency generator and two tanks of propane of 420 pounds each.

An underground duct will connect the cabinet to the base of the tower.

At the bottom of the tower, all three sides are covered with anti-climbing panels to prevent access to the structure.

WHAT WILL THE INSTALLATION LOOK LIKE?

Xplornet requires a 50m tower in order to provide services in this area.

Below you will find an example of the dimensions of the required structure.

SEE PHOTO SIMULATIONS SCHEDULE B

7- OBSTACLE MARKING AND TOWER LIGHTING

Xplornet is committed to meeting Transport Canada and Nav Canada's obstacle marking and tower lighting requirements.

Marking and/or lighting may be required.

Xplornet anticipates that the proposed installation will not require markings or lighting and has submitted the necessary applications to the appropriate parties to obtain required approvals.

Xplornet will notify residents affected by this should Transport Canada require them.

8- THE STRUCTURE WILL COMPLY TO APPLICABLE BUILDING CODES

In terms of structural integrity, Xplornet Communications Inc. certifies that these facilities will be constructed in compliance with recognized engineering practices.

The tower and foundations are designed and approved by a licensed structural engineer and comply with the National Building Code.

9- YOUR LOCAL LAND USE AUTHORITY

In accordance with Township of North Glengarry and ISED (Innovation, Science and Economic Development

Canada, formerly Industry Canada) consultation guidelines for Radiocommunication and Broadcasting Antenna Systems (CPC-2-0-03), this information package has been mailed to all property owners within 150m of the tower structure.

In recognizing the exclusive jurisdiction of the Federal Government and in an attempt to promote some balance, ISED requires telecommunications facility developers to consult with land-use authorities as part of their licensing process. The obligation to consult may be found in the Industry Canada document, the CPC 2-0-03 customer procedure circular. The purpose of the consultation, as stated in CPC 2-0-03, is to ensure that land-use authorities are aware of the important antenna structures and/or facilities proposed within their regions and that antenna systems are deployed in a way that considers the local environment.

Public consultation:

Xplornet will provide a notification package to the local public, businesses, and property owners located within a radius of three times the tower height. In addition to the public notifications package, Xplornet will place in a local community newspaper circulating in the proposed area. The notification provides at least 30 days for written public comment.

Xplornet will respond within 14 days acknowledging receipt of the question, comment or concern and keep a record of the communication.

Xplornet will address in writing all reasonable and relevant concerns within 60 days of receipt and indicate that the party has 21 days from the date of the correspondence to reply to the proponent's response.

Xplornet will provide a copy of all public reply comments to the local ISED office.

SEE CONSULTING 150m RADIUS SCHEDULE C

Xplornet wishes to make the necessary and reasonable efforts to reach an agreement with the local municipal authorities, while respecting exclusive ISED jurisdiction pertaining wireless telecommunications systems and approval of antenna mounts, taking local concerns and interests into account.

Xplornet strongly supports colocation on existing towers and structures. Using existing structures minimizes the number of new towers required in a given area and is generally a more cost-effective way. In this case, there were no existing structures available in the area to consider.

10- INFORMATION ON ANTENNA SYSTEMS

For more information, please consult Spectrum management and telecommunications:

https://www.ic.gc.ca/eic/site/smt-gst.nsf/eng/h_sf11435.html

General information about Radiocommunication and Broadcasting Antenna Systems:

<https://www.ic.gc.ca/eic/site/smt-gst.nsf/eng/sf08777.html>

11- CONTACT INFORMATION

PROPONENT

XPLORNET COMMUNICATIONS INC.
300 LOCKHART MILL RD.
WOODSTOCK, N.-B. E7M 5C3
FAX: 506-328-1582
EMAIL: VRE@corp.xplornet.com

LOCAL LAND USE AUTHORITY

Township of North Glengarry
90 Main Street P.O. Box 700
Alexandria, ON K0C 1A0
613-525-11106
jacob@northglengarry.ca

C-Projection Inc.

11 PLACE DE TOUL
LORRAINE (QUÉBEC) J6Z 4J8
(514) 945-5735
Info.consultation@cprojection.com

ISED

Spectrum Management – Northern and Eastern
Ontario District
2 Queen Street East
Sault Ste. Marie, Ontario P6A 1Y3
Phone: 1-855-465-6307
Fax: 705-941-4607
Email: ic.spectrumenod-spectredeno.ic@canada.ca

12 - CLOSING OF COMMENTS

Xplornet is fully committed to the public consultation. You are welcome to share your comments with Xplornet on this proposal. Please provide your comments in writing, indicating reference **ON8131**, within 30 days of receipt of this notice to:

By mail:

C-Projection inc.

11 Place de Toul
Lorraine (Québec) J6Z 4J8
(514) 945-5735

Or by email:

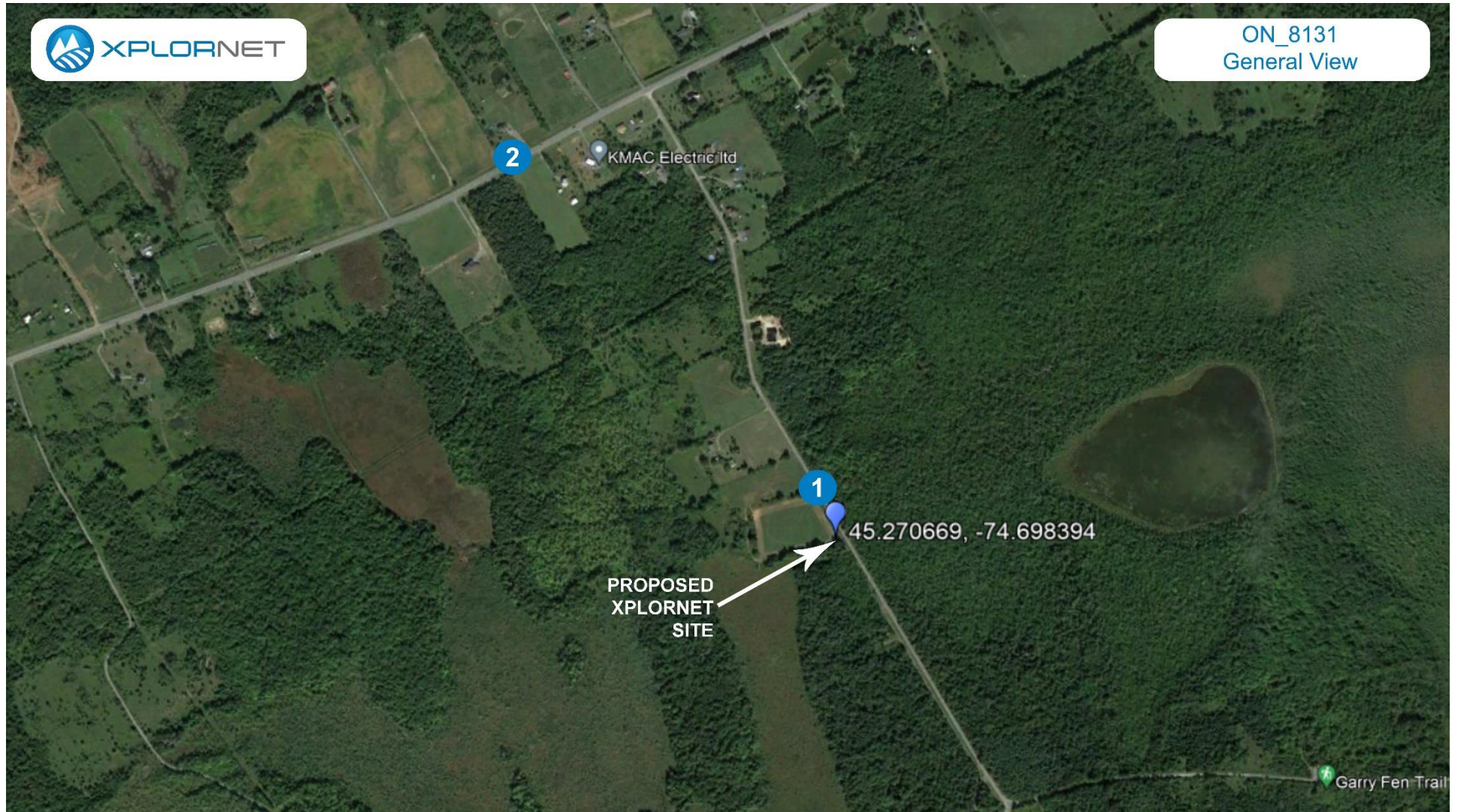
Info.consultation@cprojection.com

We will receive relevant and reasonable written comments from residents until **July 18, 2022**.

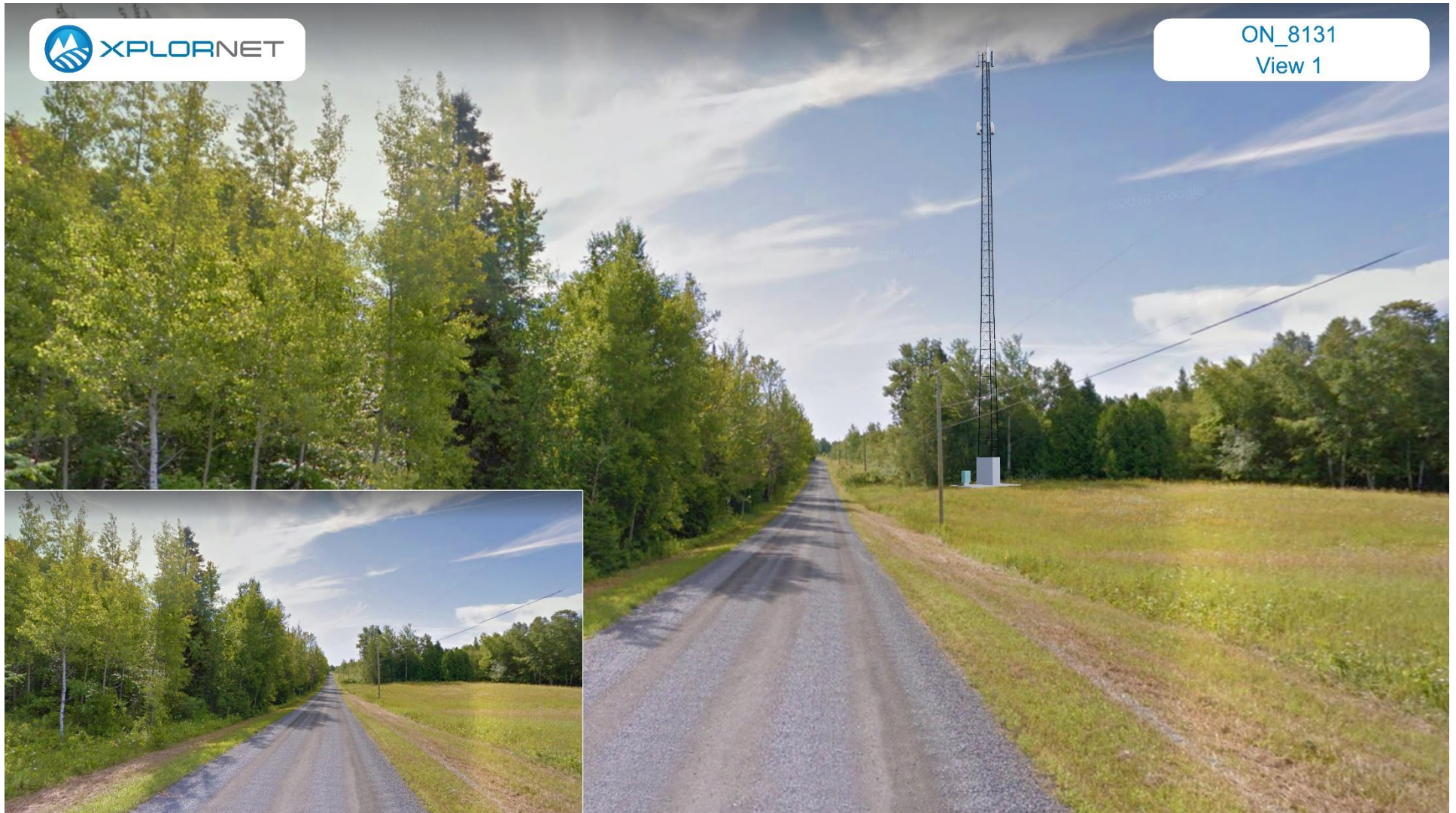
ON8131 Loch Garry



SCHEDULE B
Photo simulation General View of the proposed tower



SCHEDULE B
Photo simulation #1 of the proposed tower.



SCHEDULE B
Photo simulation #2 of the proposed tower.



SCHEDULE C
RADIUS - CPC 2-0-03 5th Edition
Radius of 150M, 3 times the height of the tower

