



County-Local Municipal Update Spring 2021

T.J. Simpson
Chief Administrative Officer

Ben de Haan
Director of Transportation and Planning Services





Purpose

- Informal way to provide information to local municipal partners
- Has been several years since this forum has been used
- CAO will provide brief County update applicable to all local municipalities
- Director of TPS will provide 2021 infrastructure information specific to local municipalities



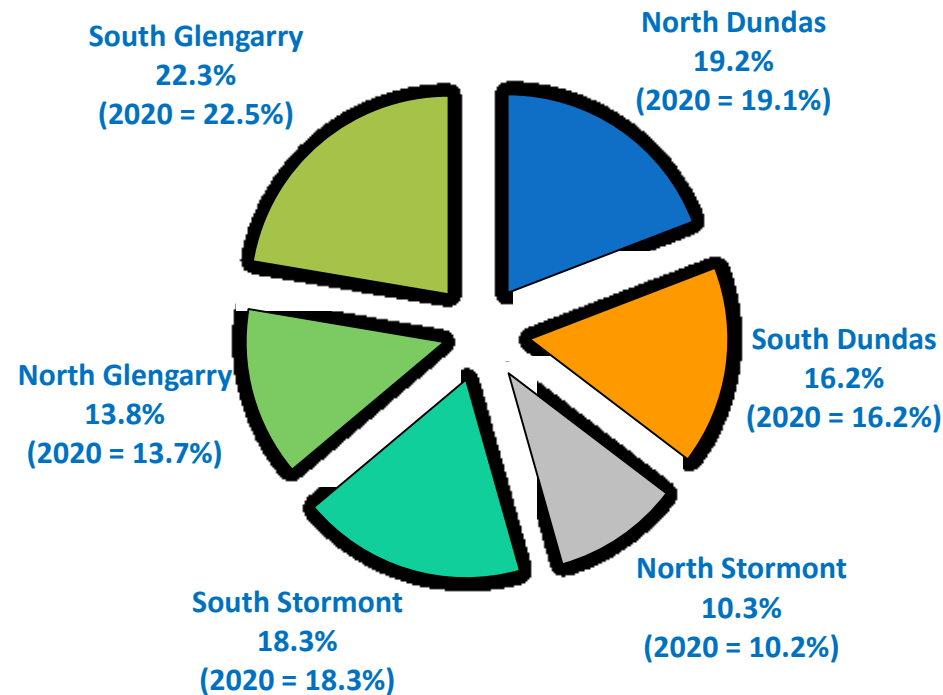
2021 Budget

- Approved by County Council on March 15th, 2021
- Modest tax rate decrease of 0.74%, based on average 2021 residential assessment of \$221,663
- Commitments to Dundas Manor/Maxville Manor (\$6.5M total) now fully funded
- 2021 Budget = \$50.6M - Top 3 expenses:
 1. Transportation Services \$25.3M
 2. Policing \$10.4M
 3. Health/Social Services \$9.8M*

* Includes EOHU, land ambulance, social/housing services, child-care, Glen Stor Dun Lodge

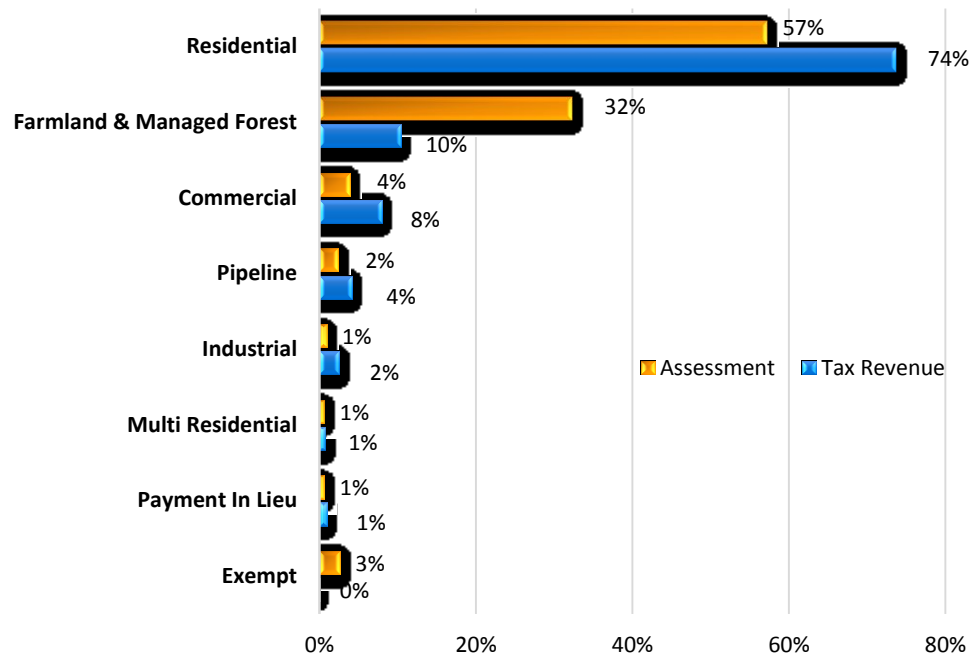
Proportion of Taxable Assessment

PROPORTION OF TAXABLE ASSESSMENT 2021



Assessment/Property Tax Revenue by Tax Class

Assessment & Tax Revenue by Property Class 2021



74% of the Total Tax Revenue is Raised From the Residential Property Class



Economic Dev./Tourism

- Tara Kirkpatrick recently hired as new **Manager of Economic Development**
- **Regional Incentives Program** currently in amendment process
 - Once amendments approved by County Council, local municipalities will amend their CIP's to include new document
 - Amendments based on feedback from users
 - Intake period tentatively scheduled for June 2021
 - \$250K in grant money allocated by County Council for 2021
 - Over \$600K invested in local businesses since 2018



Economic Dev./Tourism

- New Ec. Dev. plan approved by Council in late 2020
 - Roadmap for the next 2-3 years
- 6 Plan Priority Areas:
 1. Continued advocacy (e.g. broadband access, natural gas expansion, etc.)
 2. Enhance available digital tools (e.g. social media, etc.)
 3. Enhance Regional Incentives Program
 4. Regional investment growth (e.g. investment attraction plan)
 5. Strengthen SDG brand (“Where Ontario Began”)
 6. Attract and invest in small business/producers (e.g. remote workers)



SDG County Library

- Vaccination Assistance - EOHU
 - Assisting the public registering for COVID-19 vaccine appointments
 - Winchester, Morrisburg, Ingleside, Lancaster, Alexandria, and Finch Branches
- Due to provincial lockdown, only curbside pickup service being offered in-branch. Other programs offered virtually.
- 50th Anniversary events being planned - hopefully “live” events can take place later this year.



IT Services

- Council authorized 2 staffing changes:
 - Added 1 additional IT Support Technician – recruitment underway
 - Reclassified Business Systems Analyst to Coordinator

These changes will provide increased customer service to the County and its local municipalities

- VoIP Project - Voice over IP
 - Recently implemented at County Administration Building
 - In process of implementing at County patrol garages and replicating at the Township of South Glengarry (Administrative Office, Lancaster firehall, Char-Lan Arena)



Education Review

- 2019 County Strategic Plan
 - Educating children in their own communities identified as 1 of 4 priorities
- Horizon Educational Consultants engaged to complete study
- Work recently commenced
- Draft report to be completed by end of July 2021
- Will use document to advocate for improvements for students within SDG

Transportation – North Glengarry

- McPhee Bridge (\$1,375,000)



Transportation – North Glengarry

- Downtown Alexandria (EA and new traffic signals)





Transportation – North Glengarry

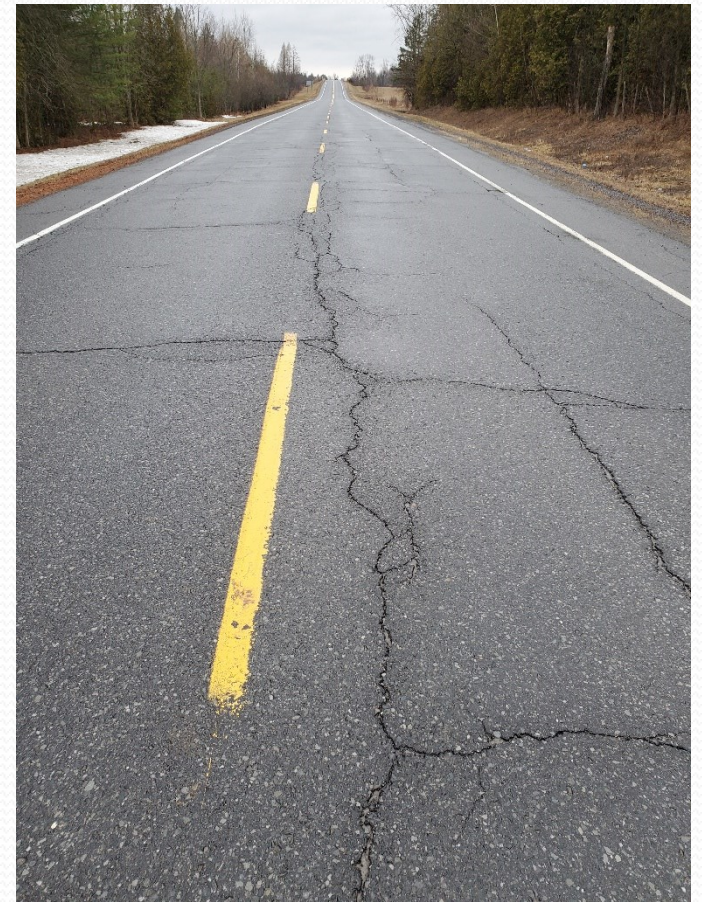
- SDG 30 – north of SDG 22 (\$1,062,000)





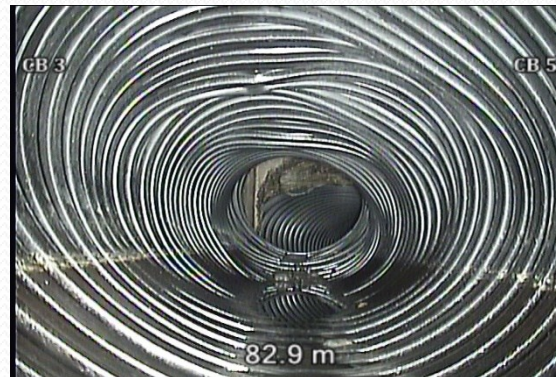
Transportation – North Glengarry

- SDG 23 (\$690,000)



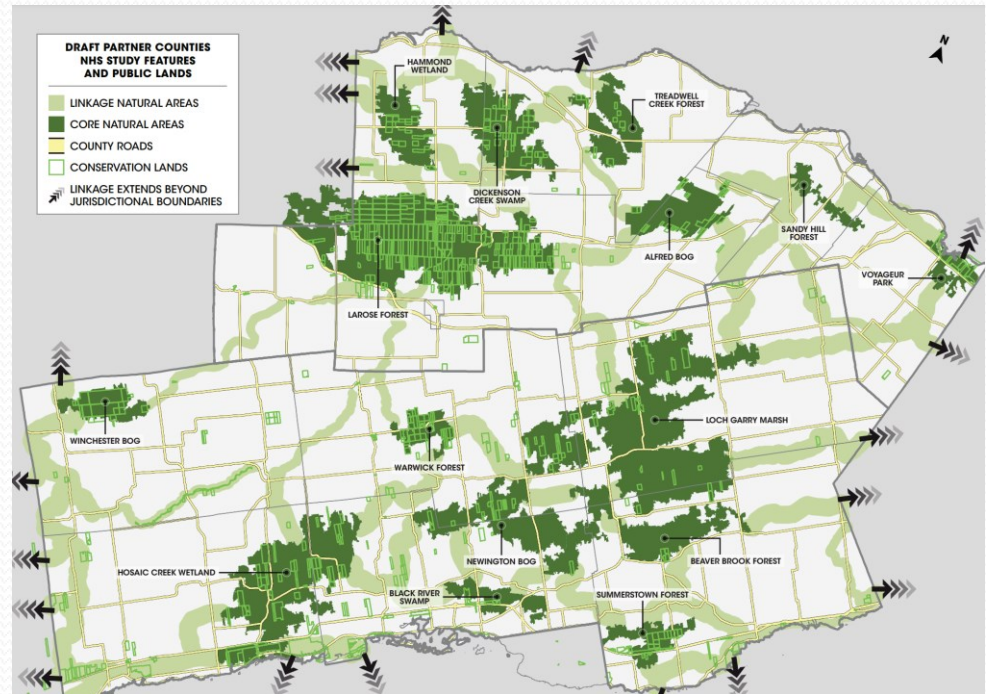
Transportation - General

- Regional Waste Management Plan
- Winter Maintenance Innovations
- Investments in Patrol Yards
- CCTV Program for Storm Sewers
- Repair program for culverts/ bridges
- 2-way Radios



Planning

- Natural Heritage Study
- Official Plan Appeal
- Growth and Population Study
- LiDAR



Forestry

- Purchase of new properties
- Management of existing properties
- Roadside tree planting
- Woodland Advisory Service
- Noxious Weeds



Forestry – Howard S. Mitchell

